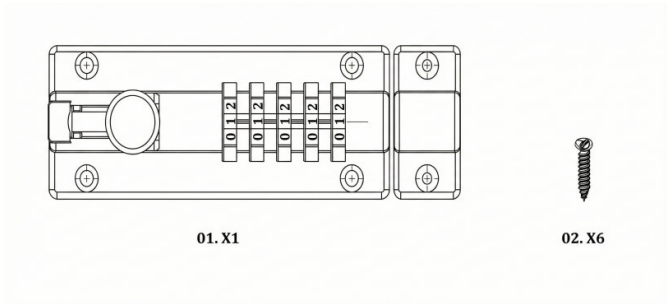
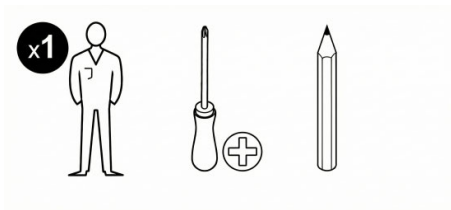


## Parts

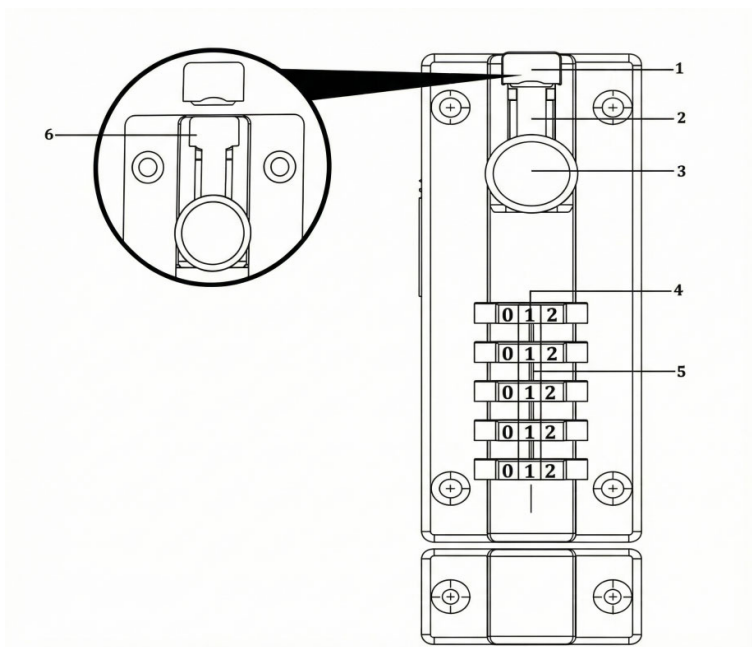


## You will need



## Contents

EN	
Product description	3
Safety	4
Guarantee	4
Installation	5
Functions & Settings	7
Use	7
Care & maintenance	7



1.Plastic cover 2.Sliding track 3.Button 4.Wheel 5.Alignment line 6.Code change area

#### Safety

##### Before you start

- Please read the instructions carefully before installing the product
- Please check the installed door suit for this product size.
- The original password is 0000, set the dials 0-0-0-0 to open lock.
- Set up your own password before installation.

##### Safety

- Before using the tools,ensure that you wear appropriate PPE for anti-injury.
- Keep children away from the tools for anti-injury.
- If you are using power tools, please stay focused and do not divert attention.
- It is recommended to use on wooden doors.
- This product is for indoor and outdoor use.

##### Guarantee

We take special care to select high quality materials and use manufacturing techniques that allow us to create products incorporating design and durability. This product has a manufacturer's guarantee of 10 years against manufacturing defects, from the date of purchase (f bought in store)or date of delivery (f bought online),at no additional cost for normal (non-professional or commercial) household use.

To make a claim under this guarantee,you must present your proof of purchase (such as a sales receipt, purchase invoice or other evidence admissible under applicable law),please keep your proof of purchase in a safe place. For this guarantee to apply, the product you purchased must be new, it will not apply to second hand or display products. Unless stated otherwise by applicable law, any replacement product issued under this guarantee will only be guaranteed until expiry of the original period guarantee period.

This guarantee covers product failures and malfunctions provided the product was used for the

purpose for which it is intended and subject to installation, cleaning, care and maintenance in accordance with the information contained in these terms and conditions, in the user manual and standard practice, provided that standard practice does not conflict with the user manual.

This guarantee does not cover defects and damage caused by normal wear and tear or damage that could be the result of improper use, faulty installation or assembly, neglect, accident, misuse, or modification of the product. Unless stated otherwise by applicable law, this guarantee will not cover, in any case, ancillary costs (shipping, movement, costs of uninstalling and reinstalling, labour etc), or direct and indirect damage.

If the product is defective, we will, within a reasonable time, replace or refund.

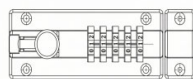
Rights under this guarantee are enforceable in the country in which you purchased this product

Guarantee related queries should be addressed to the store you purchased this product from.

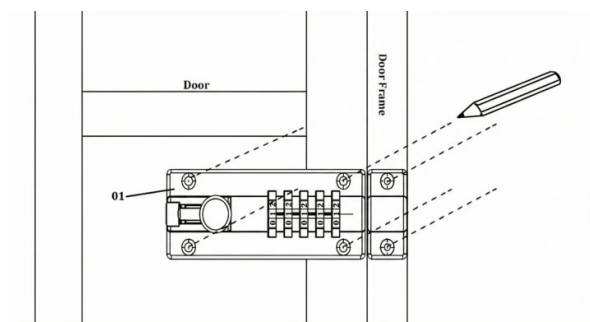
The guarantee is in addition to and does not affect your statutory rights.

IMPORTANT- RETAIN THIS INFORMATION FOR FUTURE

REFERENCE: READ CAREFULLY



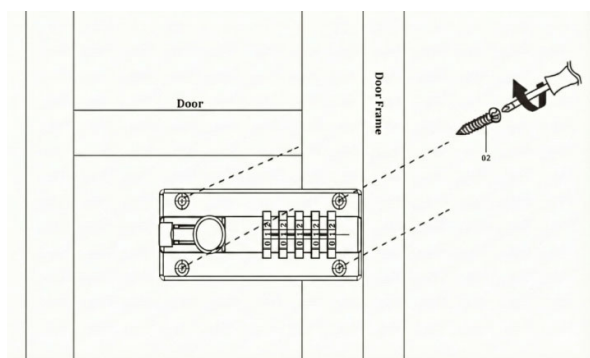
01



Mark the hole positions, make sure two parts at the same level.

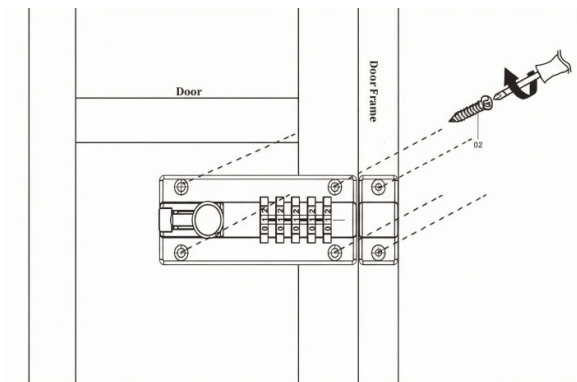


02



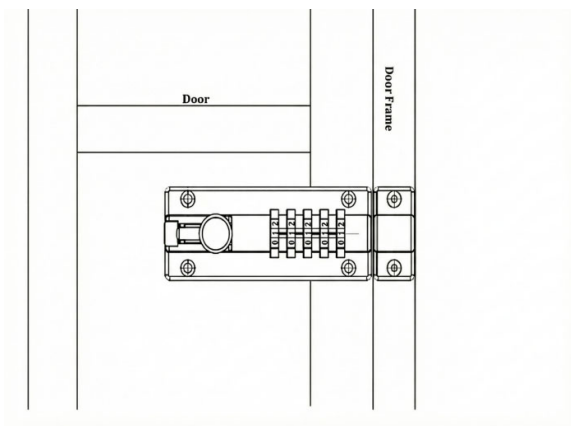
Fix the main plate onto the door

03 0.2x2

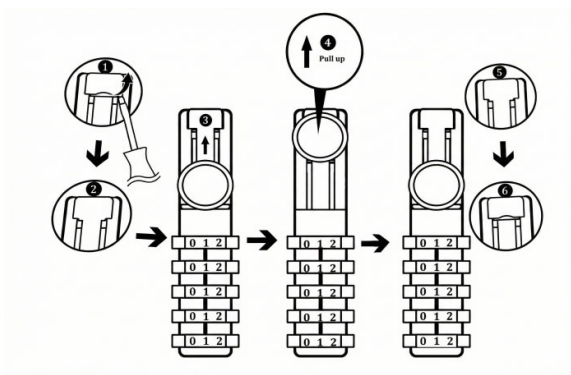


Fix the other plate onto door frame.

04



Installation finished.



Reset your own code

Use

Before you start

Prepare screwdriver, pencil.

Measure the gap between door and door frame,check product size and make sure it is suitable.

Functions and settings

This product is used to fasten &lock your door or gate

Four digital combination lock offers 10,000 different combination which is safer and convenient than key lock.

For indoor and outdoor use

Superior rust resistance

Controls

ONLY fixings included

Operation

One-way screws with feature of anti-stolen, but be carefully as the screws cannot be loosen after installed.

Care and Maintenance

After use

After installation,please clean the dust, oil and other impurities in time.